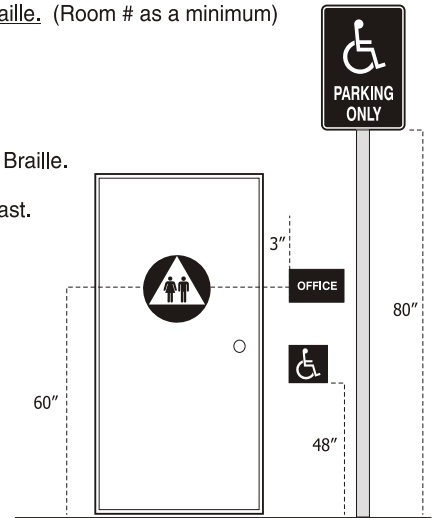


▶ ADA REGULATIONS

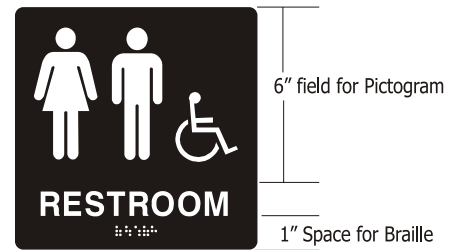
Signs of Our Times, Inc. makes every effort to provide accurate, reliable information regarding ADA regulations, however, we can assume no liability for the information provided. Make sure to check your State and local codes for further requirements.

- Sign designating a Room or Space must have Raised Letters and Grade II Braille. (Room # as a minimum)
- Signs must have a matte or non-glare finish.
- Characters and symbols shall have a high contrast with their background.
- Directional and Informational signs are not required to have raised letters and Braille.
- Directional and Informational signs must comply with matte finishes and contrast.

- Characters to be between 5/8" and 2" in height.
- Characters to be uppercase and a sans serif type style.
- Characters to have a width to height ratio of 3:5 to 1:1 (60%-100%)
- Character stroke width to height ratio of 1:10 to 1:5 (10% - 20%)
- Characters to be raised a minimum of 1/32".



- Pictograms to be within its own 6" high field.
- Braille shall be located below corresponding text.
- Braille shall be below last line of text in multi-lined signs.
- Braille to be dome shaped (Rasters) or rounded.
- Accessible Restrooms and Entrances must display the ISA Symbol.
- Signs shall be mounted on latch side of door on wall, 60" on center.
- The ISA Entry Symbol is required to be White on Federal Blue unless otherwise permitted.
- Braille must have a 3/8" margin from any other sign element including the sign edge (at least 1" Space Req).



▶ BRAILLE COMPARISON



Dome Shaped



Incorrect



Incorrect

Sign Methods	Domed Shaped Braille	Braille Correct Size and Spacing	Letters have Bevel Edge	Integral Subsurface Colors	Outdoor Durability	Choice of Material	Integral Window Slots	Subsurface Graphic Option
ADA/Raster	YES	YES	YES	YES	YES	YES	YES	YES
Embossed	YES	?	YES	YES	?	NO	?	YES
Photopolymer	?	?	YES	NO	?	NO	?	NO
Sandblasted	?	?	?	NO	?	YES	?	NO
Etched Metal	?	?	?	NO	YES	YES	?	NO
Molded Signs	?	?	?	?	?	NO	?	NO